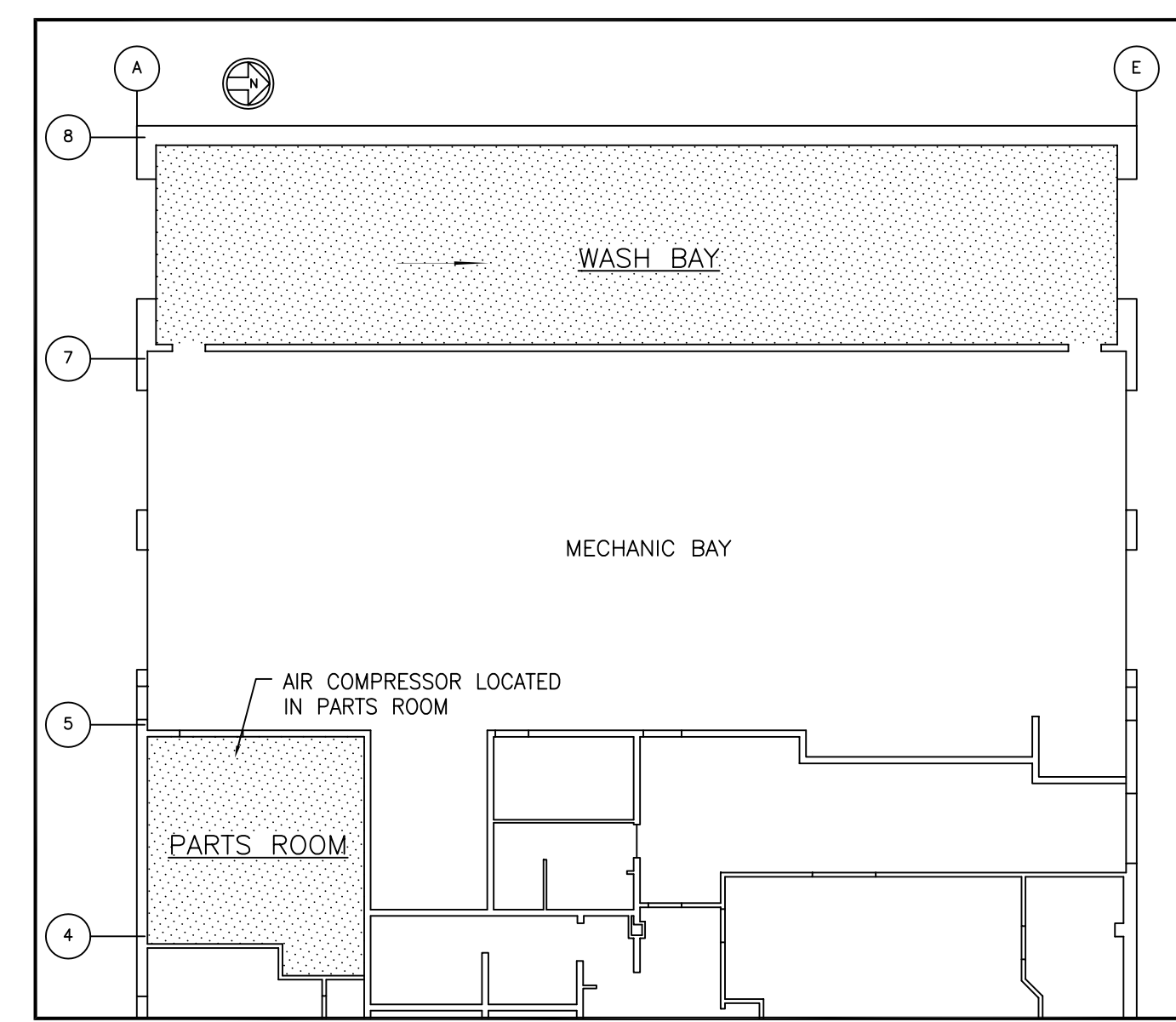
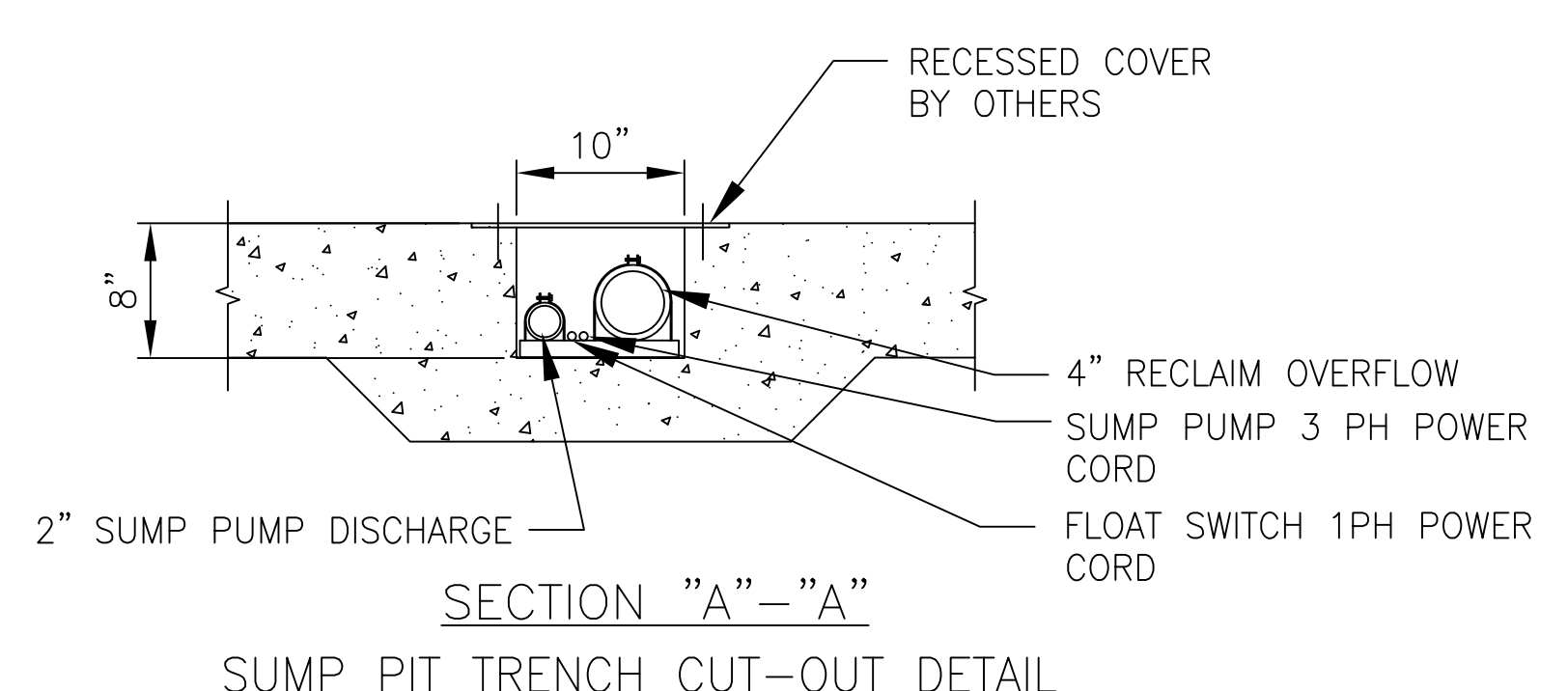
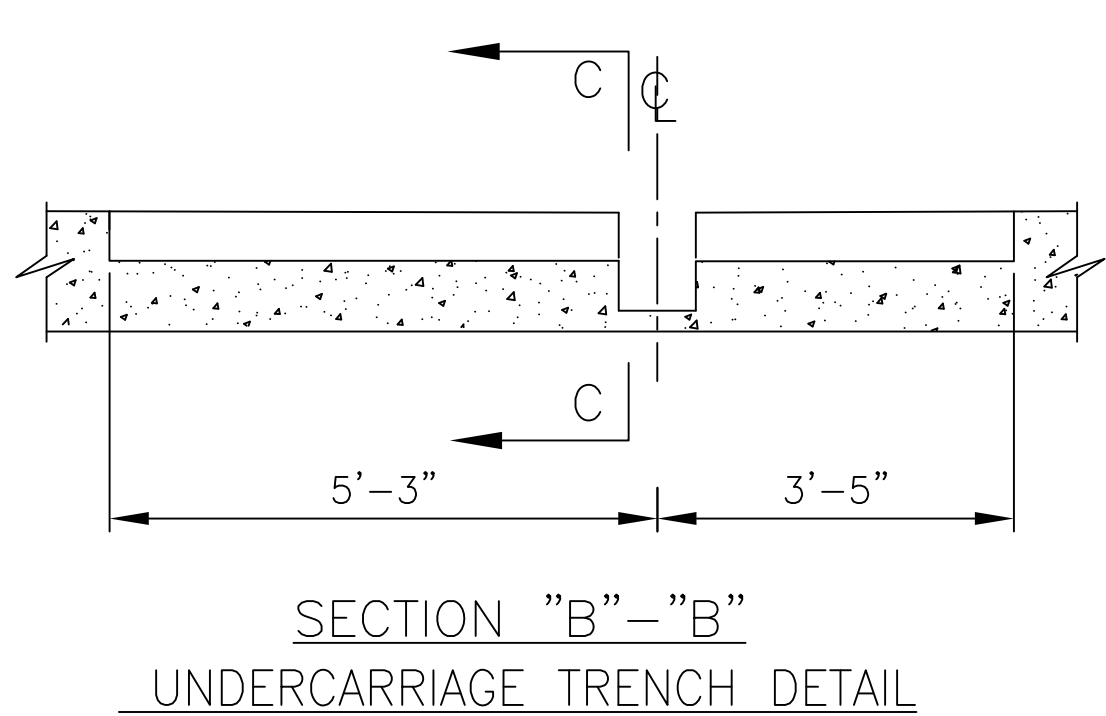
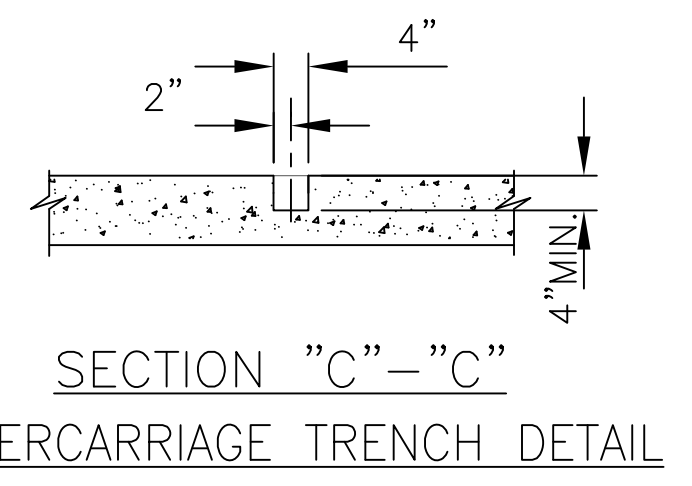


**PLAN VIEW
LAYOUT OF EQUIPMENT**



- SERVICES REQUIRED**
- WATER - 2" SUPPLY LINE, 40 P.S.I.G. MIN. MAINTAINED
 - AIR - 1/2" SUPPLY LINE @ 80 P.S.I.G.
 - ELECTRIC - 480 VAC./ 60 HZ/ 3 PH./ 125 AMP SERVICE (WASHER CONTROL PNL)
 - 208 VAC./ 60 HZ/ 3 PH./ 35 AMP SERVICE (AIR COMP. LOC. IN PARTS RM.)
 - 120 VAC./ 60 HZ/ 1 PH./ 20 AMP SERVICE (AIR DRYER LOC. IN PARTS RM.)
 - DRAIN - 6" TO WATER RECLAIM PIT
 - 6" OVERFLOW TO SEWER
 - PEAK LOAD - 44.8 HP WASHER
 - 5 HP AIR COMPRESSOR
 - * - POINT TO WHICH SERVICES ARE TO BE BROUGHT AND CONNECTED BY GENERAL CONTRACTOR

NOTE: THIS DRAWING IN DESIGN IS THE PROPERTY OF THE ROSS AND WHITE COMPANY AND MUST NOT BE COPIED OR USED EITHER DIRECTLY OR INDIRECTLY FOR ANY WORK OTHER THAN THAT OF THE ROSS AND WHITE COMPANY WITHOUT SAID COMPANY'S EXPRESSED PERMISSION. ALL RIGHTS OF INVENTION OR DESIGN ARE RESERVED.

REV	REVISION	DATE	REV	REVISION	DATE
E			A	WWT DIMENSION	9/22/16
F			B	AIR COMP.-3 PH.	9/27/16
G			C	SUMP PIT REV.	10/21/16
H			D	KEY PLAN	11/18/16
I				DRAWN BY: JSM	DATE DRAWN: 9/16/16
J				DATE PLOTTED:	SCALE: 1/8"=1'-0"
K				CHECKED BY: TA	DATE CHECKED:

ROSS
WHITE COMPANY

1090 Alexander Court
Cary, Illinois 60013
Phone: (847) 516-3900
Fax: (847) 516-3989

MODEL #TR-1025-M BUS WASHER ASSEMBLY

APPROVED: _____

1606-1