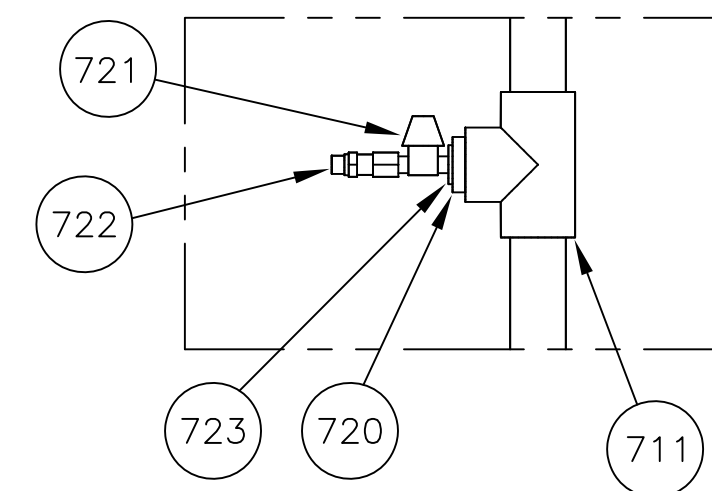
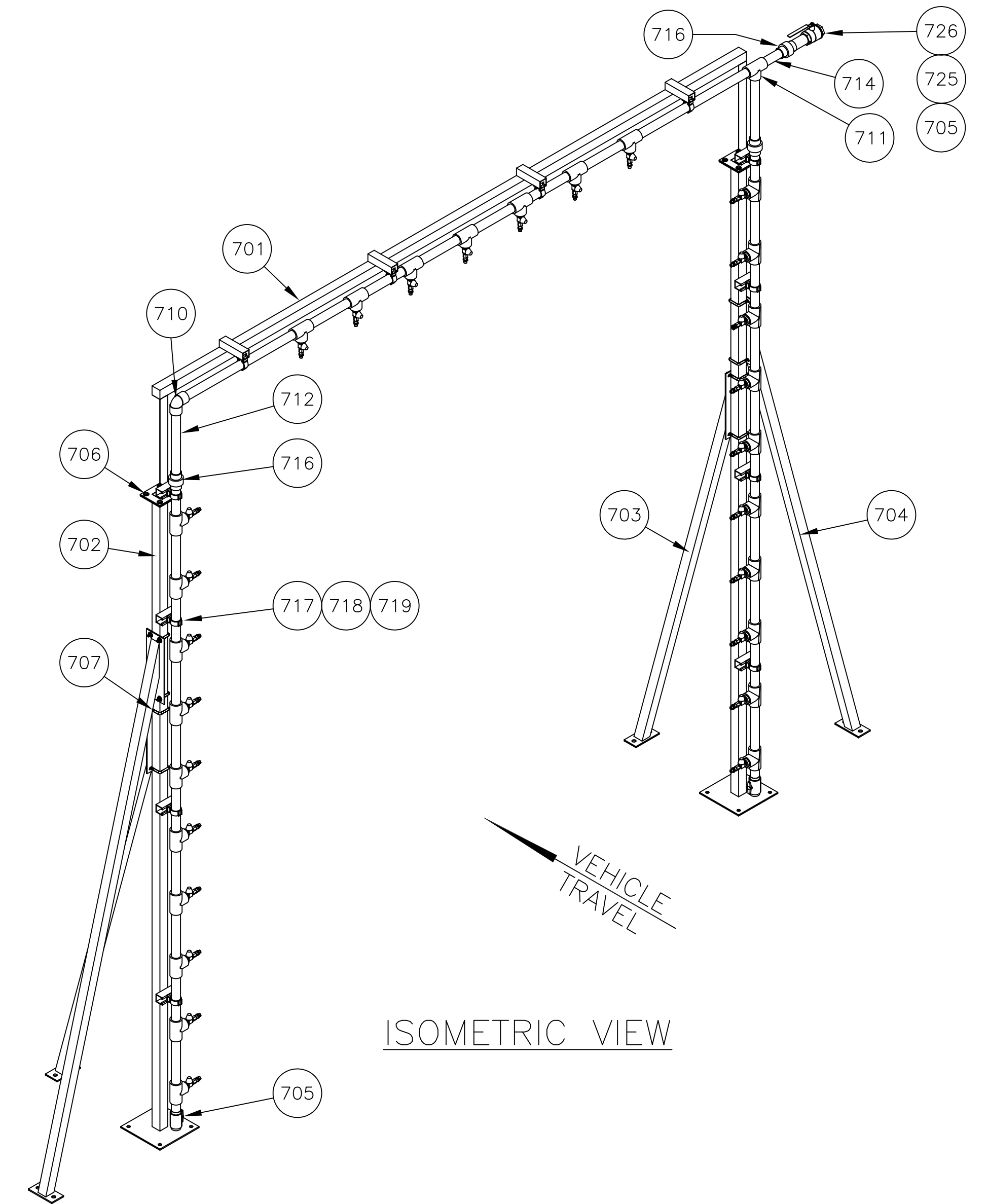
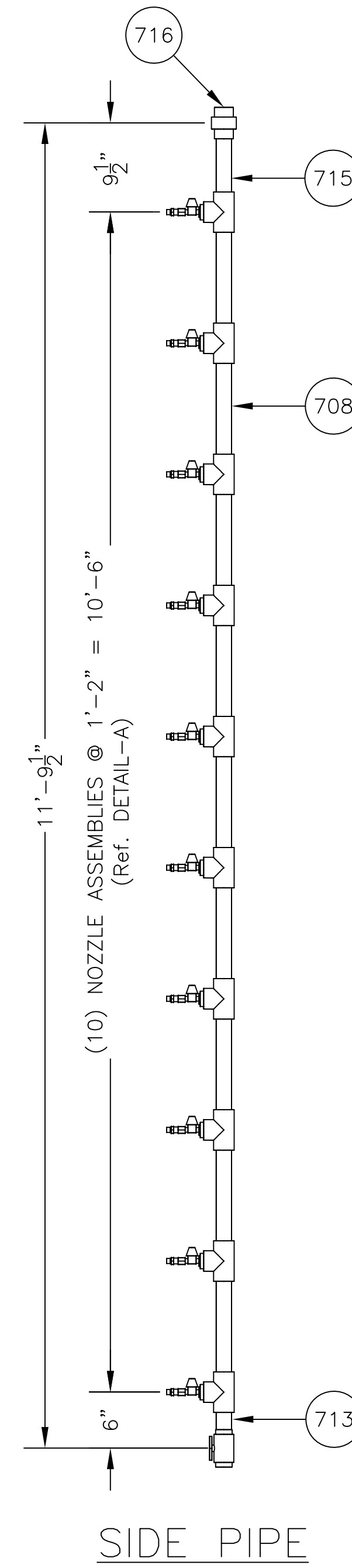


(27 GPM @ 40 PSI)
R.O. RINSE ARCH ASSEMBLY




DETAIL-A
NOZZLE ASSEMBLY



NOTE: THIS DRAWING IN DESIGN IS THE PROPERTY OF THE ROSS AND WHITE COMPANY AND MUST NOT BE COPIED OR USED EITHER DIRECTLY OR INDIRECTLY FOR ANY WORK OTHER THAN THAT OF THE ROSS AND WHITE COMPANY WITHOUT SAID COMPANY'S EXPRESSED PERMISSION. ALL RIGHTS OF INVENTION OR DESIGN ARE RESERVED.

REV	REVISION	DATE	REV	REVISION	DATE
E			A	ITEM# 703, PART# WAS 100117.	6/8/10
F			B		
G			C		
H			D		
I			DRAWN BY: DKS		DATE DRAWN: 5/27/10
J			DATE PLOTTED:		SCALE: 1"=1'-0"
K			CHECKED BY:		DATE CHECKED:



1090 ALEXANDER COURT
CARY, ILLINOIS 60013
PHONE: (847) 516-3900
FAX: (847) 516-3989

R.O. RINSE ARCH ASSEMBLY

SOUTH BEND, IN

APPROVED:

1004-7